

# Arctic Wolves

Heather Hammonds



PM

# Arctic Wolves

Heather Hammonds



## Contents

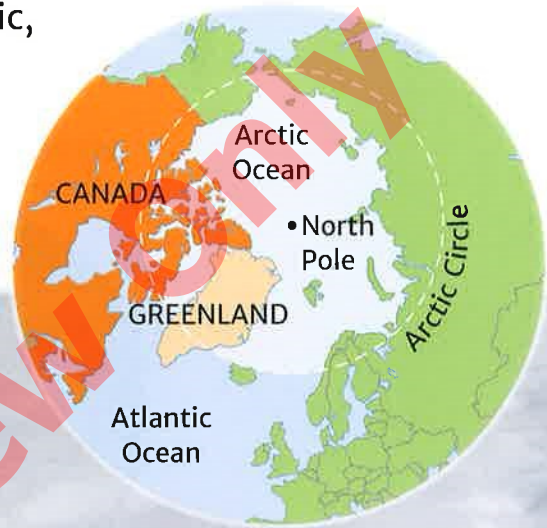
Arctic Wolves . . . . .	2
Living in the Arctic . . . . .	6
Wolf Packs . . . . .	8
Arctic Wolf Puppies . . . . .	12
Arctic Wolves and Humans . . . . .	16
Threats to Arctic Wolves . . . . .	18
Glossary . . . . .	23
Index . . . . .	24

## Arctic Wolves

The **Arctic** is one of the coldest places on Earth.

Arctic wolves are found in the Arctic, on islands in Northern Canada.

There are Arctic wolves in some parts of Greenland, too.



The Arctic is the area inside the Arctic Circle, around the North Pole.



Arctic wolves look different from other wolves, such as timber wolves.

Arctic wolves have a very thick white or pale-grey coat. Arctic wolves also have shorter ears and noses than timber wolves. They have lots of fur between the pads on their paws, too. These things help them to keep warm in the freezing Arctic weather.



The Arctic wolf's pale coat makes it hard to see in the snow.



The timber wolf has a darker coat than the Arctic wolf.

Arctic wolves live in family groups, just as other wolves do. These family groups are called “packs”.

Wolf packs live, travel and hunt for food together. They run, play and eat on the cold, icy Arctic land, where not many animals can survive.



Arctic wolves are very powerful animals. They are able to travel long distances to hunt for musk oxen and caribou. Musk oxen and caribou also live in the Arctic. Arctic wolves hunt smaller animals such as Arctic hares, too.



musk ox



caribou



Arctic wolves hunt Arctic hares for food.

## Living in the Arctic

Arctic wolves live on an area of open, cold land called the Arctic **tundra**.

There are no trees on the tundra.

Small grasses and other plants grow on the hard rocks and ground.

The sun shines all day and night during the summer months.

In the coldest winter months, it is dark all day and night.

It is so cold in the Arctic tundra that the ground just under the surface stays frozen all year round! This frozen ground is called “permafrost”.

Even in summer, the Arctic tundra is a very cold place.

Some animals and birds, such as snow geese, spend part of the year in the Arctic and travel south to warmer places for winter.

Arctic wolves, as well as some other animals such as **polar** bears and musk oxen, live in the Arctic all year round.

The wolves continue to hunt for food during the coldest parts of winter.



Snow geese fly south away from the Arctic for the winter.



Arctic wolves stay in the Arctic in all seasons.