

**WORLD OF
ROBOTS**

**FACTORY
ROBOTS**



TABLE OF CONTENTS

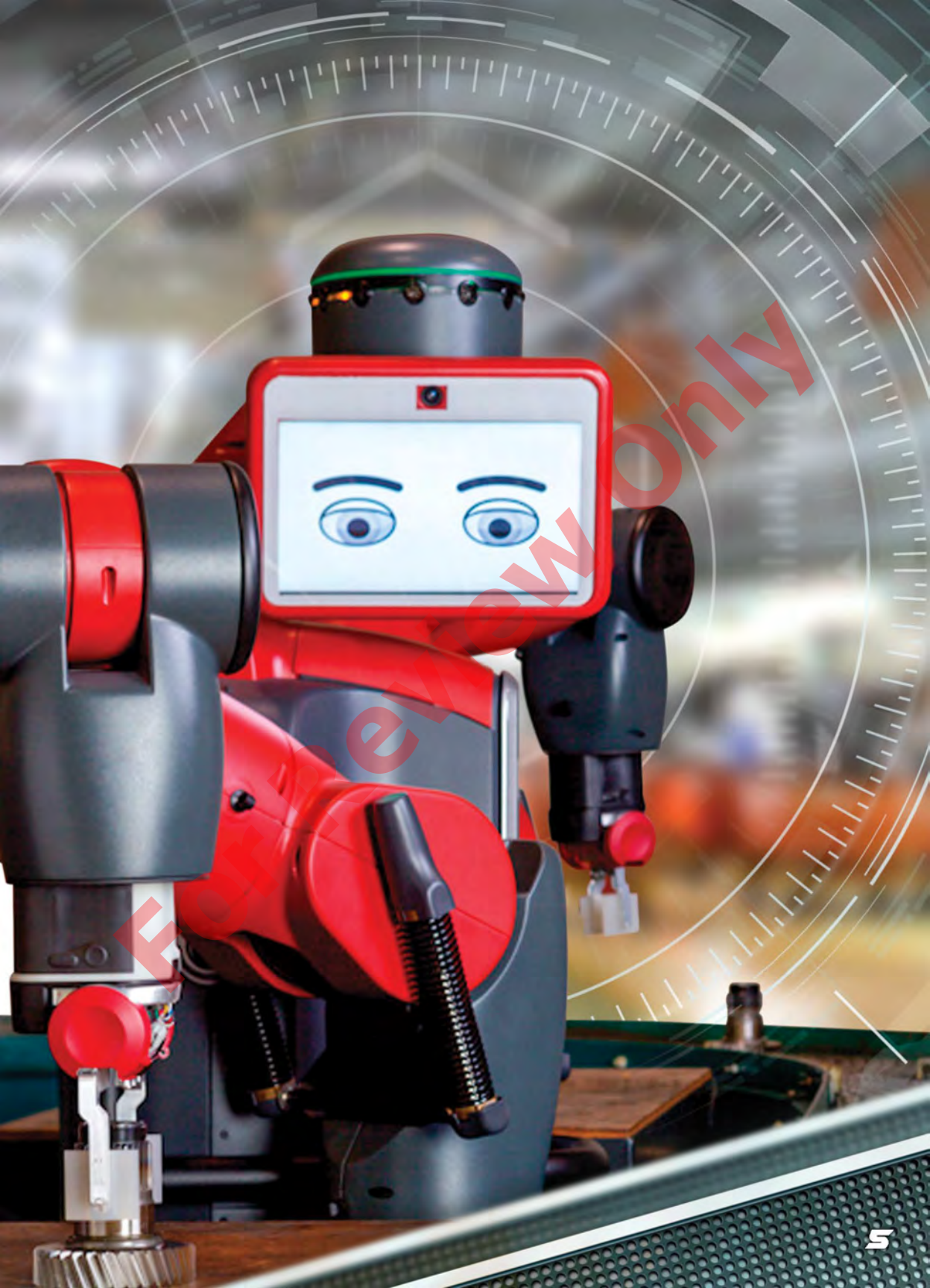
Factory Robot at Work!	4
What Are Factory Robots?	8
The Development of Factory Robots	14
Factory Robot Profile: Unimate	20
Factory Robot Profile: SCARA	22
Factory Robot Profile: Baxter	24
Factory Robot Profile: YuMi	26
The Future of Factory Robots	28
Glossary	30
To Learn More	31
Index	32

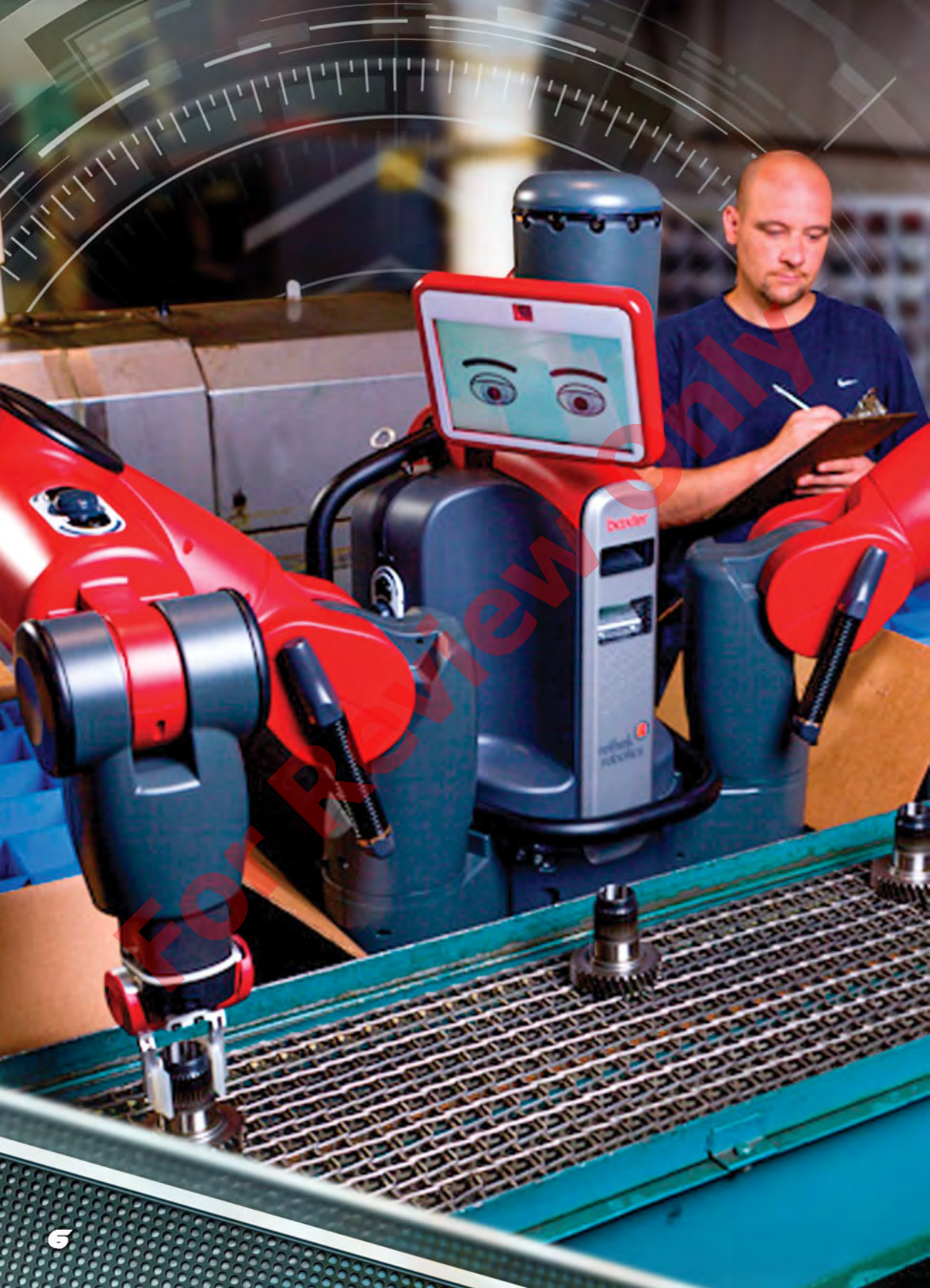
FACTORY ROBOT AT WORK!

One day, Eli and Odell found a surprise at work. It was a red robot. It was working on their **assembly line**. The boss introduced the robot as Baxter. It was a new member of the team.

Baxter had big arms and a square face. Its metal arms picked up gears. Then it put each gear carefully into a box. Odell and Eli were worried. It worked twice as fast as either of them!







The boss assured them that Baxter was not there to replace anybody. It was there to help them with rush orders. They had to ship one hundred boxes of gears that morning and could use the extra help.

Everybody worked as fast as they could. Baxter's arms moved without stopping. With five minutes to spare, they packed the last box. They all breathed a sigh of relief. Maybe this new robot was not so bad after all!



RUN, ROBOTS, RUN!

On September 21, 2016, Adidas released the Futurecraft M.F.G. This was the first shoe made in the company's robot-run factory in Germany.

WHAT ARE FACTORY ROBOTS?

Working in a factory can be dangerous. Toxic chemicals or sheets of hot metal might be needed to make products like cars or computers. A factory can also be boring. Assembly lines require the same simple action again and again.

Factory robots are here to help! Some do jobs that are too difficult or dangerous for humans. Others take over **repetitive** tasks. They can work faster than humans and do not get tired or bored.



assembly line of robots at Tesla, Inc.

