

Puzzles and Maps

Puzzles and Maps

CONTENTS

Animal Puzzles page 4

Food Travels! page 16



NATIONAL
GEOGRAPHIC



Hampton-Brown

School Publishing



Words with -le

Look at each picture. Read the words.

Example:



apple



rattle



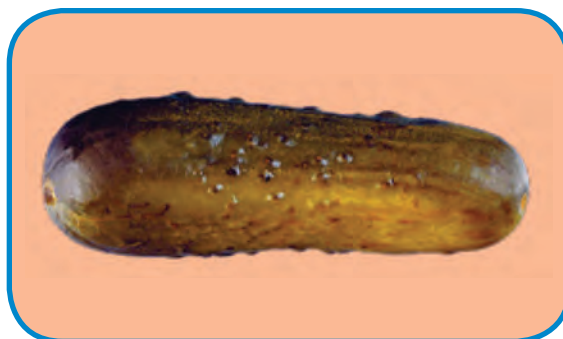
bubble



candle



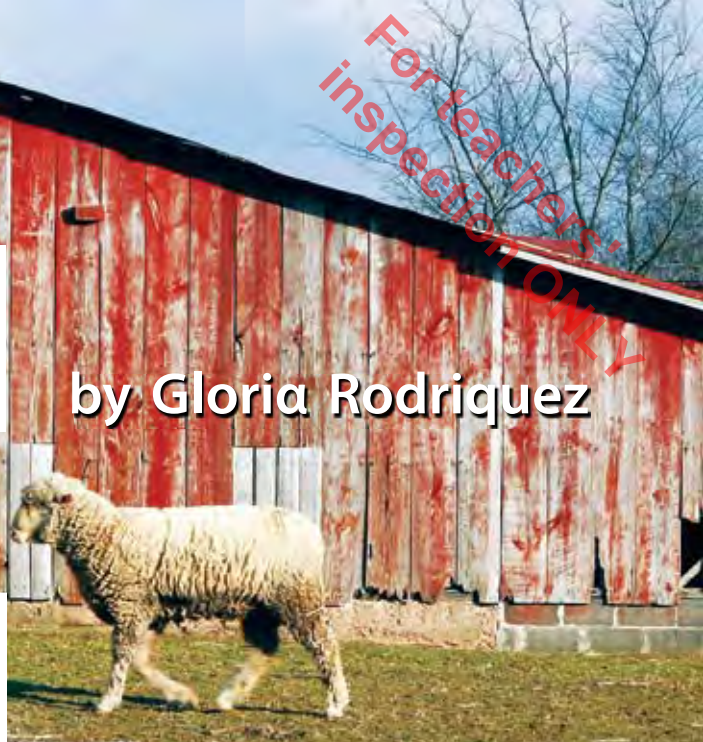
turtle



pickle

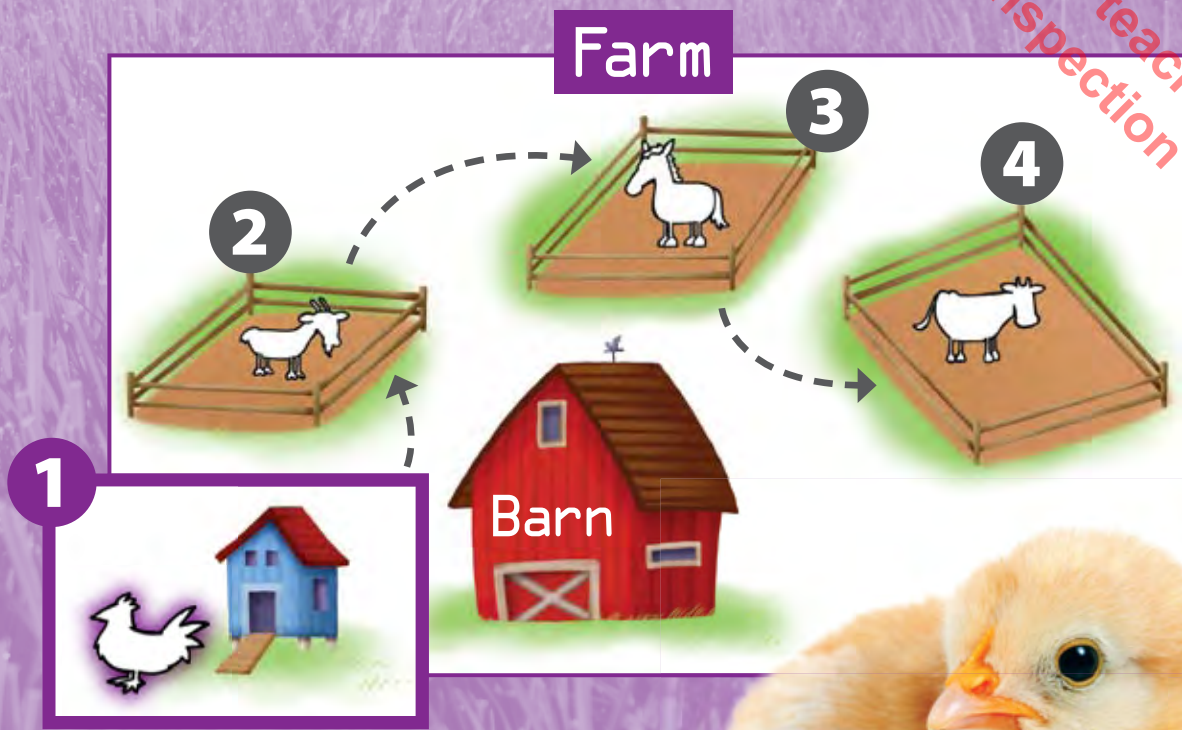
Animal Puzzles

by Gloria Rodriguez



The animals in these puzzles aren't in jungles or in a zoo in a city. They live on farms.

Read each puzzle clue. Look at the picture.
What will this animal be when it grows up?
Turn the page and see!



Puzzle 1: This little chick cries, "Peep!" It is a bundle of yellow fluff now.

What will it be when it grows up?

peep!
peep!



Syllable Division

Look at each picture. Read the words.

Example:



button



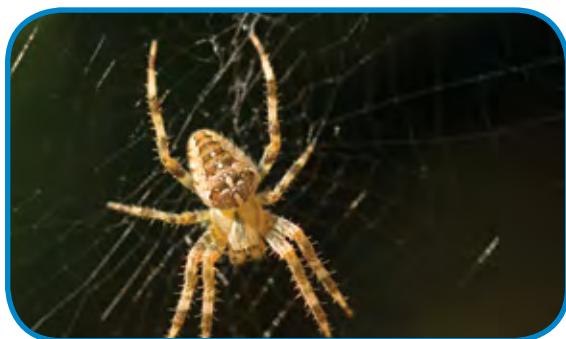
children



robin



shadow



spider



pencil

paper

Food Riddles

1

I am a yellow fruit. I am not sweet.
If you nibble on me, I will taste sour.
What am I?

A



B



C



ANSWER: C, a lemon

2

I am also a fruit. People often eat me as a
snack. I may be red or green. I'm crunchy.
What am I?

A



B



C



ANSWER: B, an apple

Look at each picture with a partner. Read the clue that goes with it. Then guess the answer.

3

I am something sweet. I am shaped like a circle. I may be plain. I may have icing or sprinkles on top. I may even have jelly inside. **What am I?**

A



B



C



ANSWER: A. a donut

4

I am something people often eat at a picnic. My name sounds like I'm a puppy in the sun. I'm not! **What am I?**

A



B



C



ANSWER: C. a hot dog

along
answer
city
often
something
yellow

Target Sound/Spellings

Final Syllable Consonant + -le

Selection: Animal Puzzles

apple
bottle
bundle
gentle
jungles
little
nibble(d)
puzzle
saddle
tickled

Syllable Division

Selection: Food Travels!

bacon
children's
Denmark
garden(s)
Jordan
local
market(s)
melons
open
over
parsnips
peppers
radishes
salad
summer
surprised
travel(s)
winter

